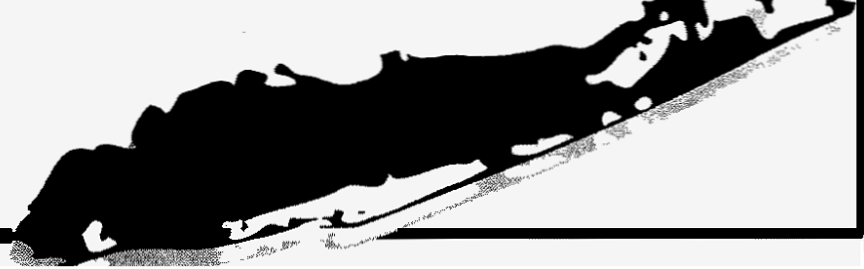




METALLAGRAM

LONG ISLAND CHAPTER



Volume 63 Issue 2

Chapter website: <http://DoL1.eng.sunysb.edu/asm/>

Next Meeting Wednesday, October 20, 2021

Where Pollo Rico Latin Bistro, Centereach, NY

Topic: Water Treatment

Speaker: Kevin Nastos, D&B Engineers and Architects, Woodbury NY

Social hour ... 6:00 pm Dinner ... 7:00 pm Meeting ... 8:00 pm

Members ... \$25 Guests ... \$27 Students ... \$15

(New and recently transferred-in members free)

Reservations appreciated – contact Dan Migliorino

at MigliorinoDan@gmail.com or (516) 468-9615

Directions to Pollo Rico Latin Bistro

Pollo Rico is located at 2435 Middle Country Road (Rte. 25), Centereach. Probably the simplest way to get there from the LIE is to take Exit 62 (Nicolls Road) and go north on CR 97 (towards Stony Brook). Continue north for about 3 miles then take the exit to Rte. 25. At the traffic signals at the end of the ramp go left and head west (Smithtown). The restaurant will appear after about 1.5 miles, on the right side of the highway. Their telephone number is 631-471-0585. Their website is:

<http://www.polloricolatinbistro.com/>

The Speaker

Kevin Nastos is a project manager and design lead with D&B Engineers and Architects who received his B.E. degree in Engineering Science at Stony Brook University specializing in Civil Engineering. He is experienced in performing design and planning services for multidisciplinary civil engineering projects including sanitary sewer collection systems, pump stations, wastewater treatment plant improvements and flood protection.

Currently he is working on an extensive sanitary sewer upgrade in Suffolk County which includes the installation of approximately 90,000 linear feet of low-pressure sewer pipe and includes the connection of 2,000 residential parcels to the system. This includes the design of a low-pressure grinder pump system which discharge to the interceptor which feeds the Bergen Point Wastewater Treatment Plant.

The Topic

Municipal civil projects make up everyday infrastructure that we often take for granted. These projects involve streets, sidewalks, water supply, solid waste management and lastly sanitary sewers. While many of these projects may seem boring, it is critical infrastructure which involves in-depth engineering designs. The overall sanitary sewer design process for municipalities will be discussed from project initiation through the design phase and finally complete with the final acceptance of the project.



**RELIACOAT
TECHNOLOGIES, LLC**

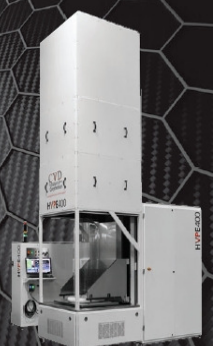
WANHUK BRIAN CHOI, PH.D.
Chief Operating Officer

35 Orville Drive, Suite 1
Bohemia, NY 11716-2533, USA

Tel: (631) 739-8818
Fax: (631) 675-2533
brian.choi@reliacoat.com
www.reliacoat.com

CVD
Equipment
Corporation

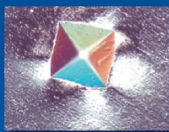
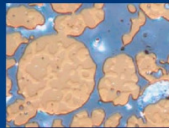
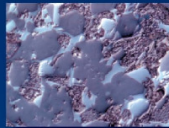
enabling tomorrow's technologies™



631 981 7081 | www.cvdequipment.com

Carl Zeiss... for all your state-of-the-art Microscopy & Digital Imaging needs

Offering features such as Image Archiving, Grain Size analysis, Dendritic Arm Spacing measurement, Non-Metallic Inclusion, Graphite and more...



Carl Zeiss MicroImaging, Inc.
Thornwood, NY
1.800.233.2343
micro@zeiss.com
zeiss.com/materials



We make it visible.

www.alliedhightech.com



LAWRENCE RIPAK CO., INC.

NDT • METAL FINISHING

Since 1952

LAWRENCE RIPAK, JR.
President, CEO



Lawrence Ripak Co., Inc.
165 Field Street
West Babylon, NY 11704-1299

Office: (631) 694-1818
Fax: (631) 694-1818
Email: lripak@riepak.com

NONDESTRUCTIVE TESTING

- Magnetic Particle
- Fluorescent Penetrant
- Visible Dye Penetrant
- Contact Ultrasonic
- Immersion Ultrasonic with data acquisition
- X-Ray
- Nital Etch
- Eddy Current

CLEANING

- Passivation
- Abrasive Blasting
- Glass Bead Blasting
- Plastic Media Blasting
- Acid Pickle Cleaning
- Alkaline Cleaning
- Parts up to 20' Long

ANODIZING

- Boric-Sulfuric
- Chromic
- Sulfuric
- Parts up to 18' Long

PLATING

- Titanium-Cadmium
- Cadmium
- Brush Plating

PAINTING

- Primers
- Top Coats
- Dry Film Lubricants
- Fuel Tank Coating
- Teflon
- High Temp Primers
- Masking

SHOT PEENING

- Automatic and Manual
- Regular & Hard Cast Steel
- Glass Bead
- Ceramic
- Parts up to 8 Feet Long
- Post-Peen Cleaning

CONVERSION COATINGS

- Alodine 1200
- Phosphate Fluoride
- Sol-Gel

OTHER PROCESSING

- Stress Relieving
- Conductivity Testing
- Hardness Testing
- High Humidity Testing
- Salt Spray Testing



Denise Marcoccia
CEO

dmarcoccia@cladmetal.com
C: 631.988.0732

P: 631.666.7750 x 111 | F: 631.666.5347
1516 Fifth Industrial Court, Bay Shore, NY 11706

www.cladmetal.com



Quality Products for Metallographic
Sample Preparation & Analysis



Contact Mike Hattie
(800) 675-1118 (HQ)
(203) 751-2779 (Cell)

A World of
Engineering & Testing
Under One Roof™



www.dtb.com

ATUL GOKHALE PHD

Chief Metallurgist
Engineering & Test Division

1195 Church St.
Bohemia, NY 11716

Direct: (631) 589-6300 x614
Mobile: (631) 926-0209
Fax: (631) 589-3648
E-mail: agokhale@dtb.com

FORMISANO & ASSOCIATES, INC.

EXPERT WITNESS • LITIGATION SUPPORT
WELDING ENGINEERS • CONSULTANTS
QA /QC • CERTIFIED INSPECTION

P.O. Box 324, Gardiner, NY 12525 Phone: (845) 255-8225

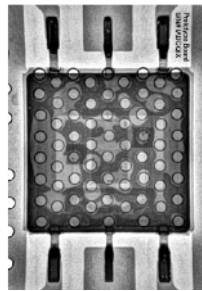
BARRY FORMISANO, PRESIDENT

Cell: (914) 388-0155

Email: formisano.assoc@att.net

WALDVOGEL METALLURGICAL, INC.

MATERIALS ANALYSIS - FAILURE ANALYSIS - MATERIALS TESTING



ELECTRONIC DEVICE FAILURE ANALYSIS
PRECISION METALLOGRAPHIC ANALYSIS
IMMEDIATE TURNAROUND

TELEPHONE: 516-564-7839
FAX: 516-485-2039
CELLULAR: 516-967-8576
E-MAIL: waldvogelmet@verizon.net

L. I. T. Labs, Inc.

Metallurgists/Analysts



Since 1985

Chemical Analysis Mechanical Testing
Metallography Tensile Testing
Failure Analysis Fastener Testing
Expert Testimonies Welder Qualifications
Hardness/Micro-Hardness Weldability Evaluation

Rao Tipirneni, President

97 Marcus Boulevard P: 800-300-8176
Hauppauge, NY 11788 F: 631-643-5628
www.litlab.com rao@litlab.com

Accredited: Nadcap Materials Testing, ISO 17025 Compliant
Specialists in Aerospace Materials Testing

STONY BROOK

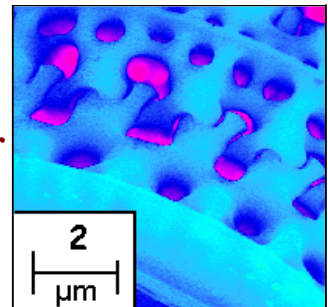
STATE UNIVERSITY OF NEW YORK

**University/Industry
Partnering Together**

Your samples-Our SEM

We also have OM, XRD,
RP, and much more.....

Dr. Jim Quinn
631-632-6663 or 8495
james.quinn@stonybrook.edu



MetLab Corporation

800-828-6866 www.metlabcorp.com TRUSTED SINCE 1968

ON-LINE FORUM

ASM now has an active on-line forum called "ASM Online Member Community". You can join by going to:

<https://www.asminternational.org/communities>




BUEHLER
Innovative
Metallographic
& Hardness Testing
Solutions



Strong Partner, Reliable Solutions

Improve your Process, Contact
Sandra Anderson, Sales Engineer
sandy.anderson@buehler.com
Direct: 224-513-6335




Struers
Ensuring Certainty

Metallography & Hardness Testing

When it comes to your metallographic preparation and testing solutions, Struers delivers...

- Powerful Equipment
- High-Quality Consumables
- Intelligent Support
- Outstanding Service

Contact Struers Account Representative
John Rys at +1 440.986.0046
john.rys@struers.com



UNITRON® EXCELLENCE BY DESIGN



Peter D. Indrigo
Senior Vice President
peterd@unitronusa.com

73 Mall Drive
Commack, NY 11725

631-543-2000 • 631-589-6975 • www.unitronusa.com

2021-2022 CHAPTER OFFICERS

Chairman
Jim Quinn - (631) 632-6663, Stony Brook University

Vice Chairman
Ken Trelewicz - (631) 244-6238, MatEcon, Inc.

Secretary
Mike Guggenheim – (631) 643-6792
Long Island Testing Lab., Inc.

Treasurer
Peter Indrigo - (631) 689-2186..

Executive Committee Members

Ed Gildersleeve, Stony Brook University (CTSR)

Konrad Kozdra, Sartorius Stedim Biotech
(631) 870-8557

Dan Migliorino, V J Technologies
(516) 468-9615

Nick Olynik, Stony Brook University (EMREL).

Collin Olson, D’Addario
(631) 439-3335

Rao Tipirneni, Long Island Testing Laboratories Inc.
(631) 643-6792,

James Waldvogel Waldvogel Metallurgical Inc.
(516) 564-7839

ADVISORY
Biays Bowerman - (631) 344-2946
Brookhaven National Laboratory

EXTEC®

High quality, affordable, precision sample preparation supplies & equipment for: **Cutting • Mounting • Grinding • Polishing**

Order online today at WWW.EXTEC.COM or contact
John Long • (610) 662-7700 • jlong@extec.com



Meet the Extec Labcut 5000® Series
Advanced Precision Composite Plate Saw.
Your solution for highly accurate and repeatable composite test coupons.
Learn more at www.Labcut5000.com

Long Island Chapter Meeting Schedule

Nov. 15, 2021 **Students Night**
Various speakers and poster presentations
Place: tbd

Dec. 8, 2021 **Jim Quinn, Life of Henry Moseley**
Place: Pollo Rico, Centereach NY

Metro NY-NJ Chapter
www.asminternational.org/web/metro-ny-nj-chapter